

SCHOOL TRAFFIC MANAGEMENT PLAN

It's all part of Council's plan



School name:

Durack State School

School address:

69 Inala Avenue Durack, Qld, 4077



Dedicated to a better Brisbane



Lord Mayor's foreword

We all know schools are busy places and speaking from first-hand experience with young children of my own, I am very focused on the importance of improving safety at schools. Schools, like children, are all different, with specific requirements.

Council's school traffic management plan (TMP) template was created to help schools manage their individual traffic challenges, with more than 160 schools having completed a TMP and now implementing their own strategies for improving safety.

Road safety is of the utmost importance to Council and the feedback received on this initiative is that schools are very positive about having a step-by-step process they can follow to work with Council, address traffic matters and reinforce good road behaviour.

We are happy to assist you with completing the template and, as an added benefit, enhanced loading zone signage will be installed once the plan is finalised.

For further information on TMPs, please visit Council's website at www.brisbane.qld.gov.au or call our 24-hour Contact Centre on 3403 8888.

Thank you for working with Council to create a better Brisbane.



Adrian Schrinner
LORD MAYOR



School overview

School Name: Durack State School

Address: 69 Inala Avenue Durack, Qld, 4077

Grades at the school:
Prep to Year 6

Administration contact number:
07 3714 2666

School population:
665

Expected population in three years time:
nil

Traffic management committee

Committee chairperson/champion: Jonas Shantz, Deputy Principal

Committee members: Beth Petersen (Principal), Colleen Hollis (BM), Mick Melvin (P&C President), Narelle Upton (Admin Officer)

Traffic management plan endorsement

Name	Position	Date
Beth Petersen	Principal	19/02/2020
Mick Melvin	P&C President	19/02/2020
Narelle Upton	Admin Officer	19/02/2020
Colleen Hollis	Business Manager	19/02/2020

Durack State School's Traffic Management Plan

This document outlines Durack State School's traffic management plan (TMP). The TMP explains how traffic and parking is managed at the school to ensure the safety of students, parents, staff and the wider community. It acts as a way to communicate expectations and rules pertaining to the school. Traffic and parking issues are recorded along with their resolutions.

Drop and go (passenger loading) zones

Drop and go zones, also referred to 'Stop, Drop and Go!' are designed to act like a flowing taxi rank with a maximum stopping time of two minutes.

For pick up / set down of students during peak AM and PM periods, parents are able to use the passenger loading zone (see **Figure 1**), accessed via Inala Avenue (eastbound lane only).

This is a NO PARKING zone, used for drop-off and pick-ups only. Parents and carers are only permitted to stop for up to two minutes if they are dropping off and picking up students.

If students are not ready to be collected, motorists must leave the zone and re-join the queue.

Drop and Go Signage



Newsletter and communications excerpt:



Figure 1: Map of drop and go (passenger loading) zones

Parking Areas

Figure 2 shows parking available for staff and parents as indicated, directly off of Inala Avenue from the eastbound bound direction.

Staff parking is off of Inala Avenue beside the main entrance for students. There is absolutely no parental parking permitted in car park. Deliveries are via Avocet Street, not in the staff car park.

Parents/carers are encouraged to use the **Community Car Park** and overflow space near the Hall (Avocet Street) for parking. The Community Car Park is signed with parental expectations in English and Vietnamese.

Some street parking may be available on Skylark Street.

Motorists are reminded to obey all No Stopping conditions that may apply, and not park across resident's driveways, pedestrian crossings or intersections.

Motorists who park in an unlawful manner may be reported to Council's Suburban Safety and Parking Compliance team and/or the Queensland Police Service.

Staff Car Park Signage



Community Car Park Signage

DURACK STATE SCHOOL

Parking in this car park is at the Principal's discretion. All drivers must comply with the following expectations:

- Park car before collecting students
- Do not circle (drive round and round) the car park
- No parking or standing (stopping) on yellow lines
- Pedestrians are to use paths and crossings provided
- Parking in this car park is at your own risk

Our students' safety is also your responsibility

TRƯỜNG TIỂU HỌC DURACK

Quý vị phụ huynh có được phép đậu xe hay không được phép đậu xe trong sân đậu xe này là quyền quyết định của Hiệu Trường. Tất cả những người lái xe phải tuân theo những luật lệ dưới đây.

- Phải đậu xe lại khi đi đón học sinh
- Không được lái xe chạy vòng vòng trong sân đậu xe
- Không được đậu xe hay ngừng xe lại ở những chỗ có đường kẻ màu vàng
- Phải đi bộ và băng qua đường ở những chỗ dành cho người đi bộ
- Phụ huynh phải chịu trách nhiệm cho xe của mình trong sân đậu xe nếu có chuyện gì xảy đến cho xe của quý vị

Sự an toàn của các em học sinh cũng là trách nhiệm của các quý vị phụ huynh






Figure 2: Map of parking areas



Active Travel and Public Transport

As shown in **Figure 3**, Bike and scooter racks are available within the school grounds. Students must dismount within the school grounds and walk them to the racks.

Students, parents and carers are asked to cross roads at designated crossing points.

When crossing at pedestrian refuges and un-signalised intersections, only commence crossing when there is a suitable gap in traffic. Inexperienced pedestrians should be accompanied by an adult when crossing at these locations.

Public Transport

Public bus stops near the school are shown in **Figure 3**.

For information about what services (public and school-only) are available, students, parents and carers can visit Translink's online Journey Planner (<http://www.translink.com.au>).

Figure 3: Map of walking and cycling routes, and public transport stops

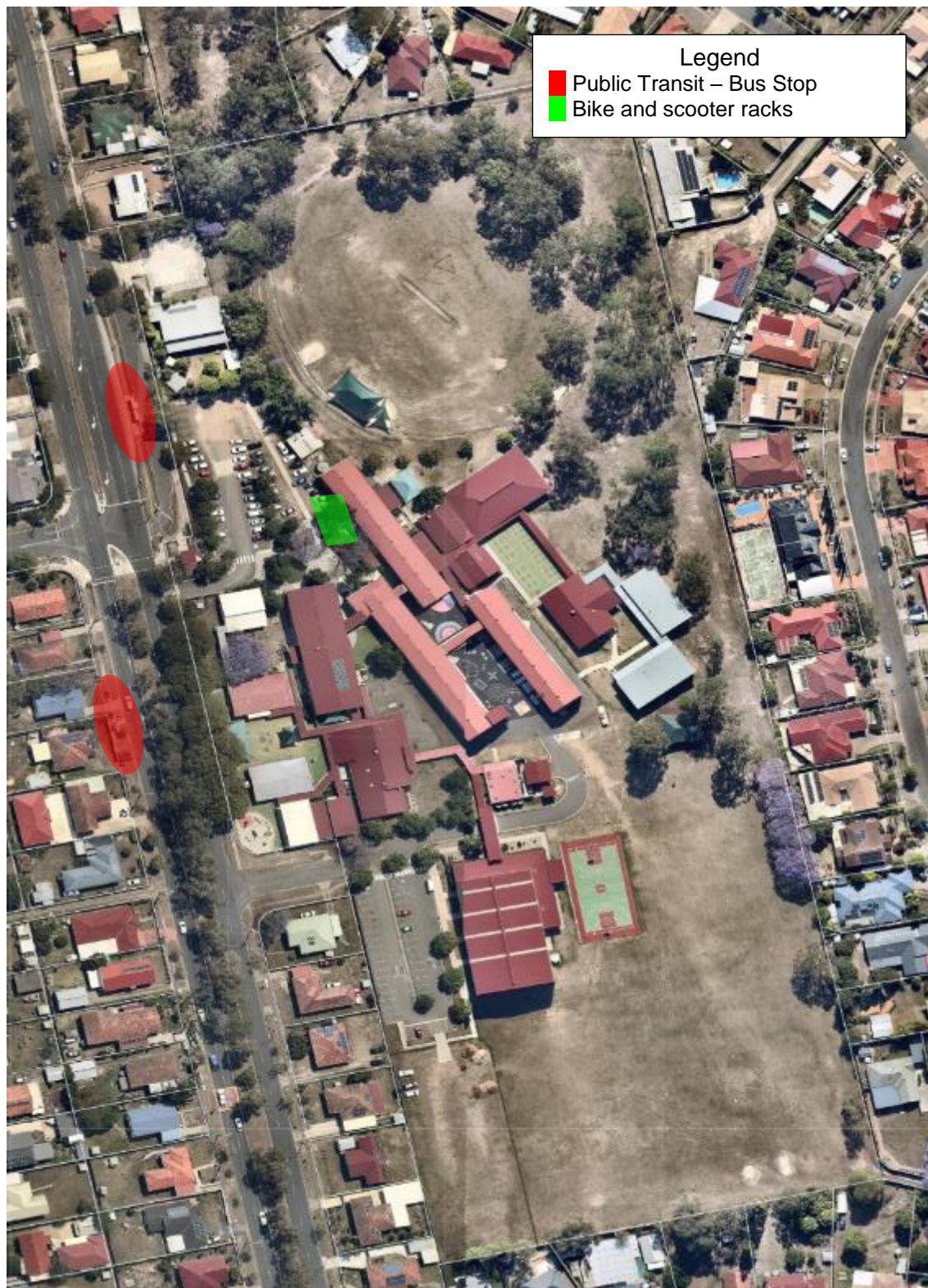


Table 7: Action plan

Date raised	Issue Description / School Comments	Council Use Only	
		Agreed action	Status
19/02/2020	Drivers using drop off zone and leaving their vehicle unattended for longer significant periods of time.	Council: Contact Brisbane city CARS (Compliance and Regulatory Services) to patrol and issue and enforcement to amend the drivers behaviour School: contact QPS to monitor the situation and educate parents in P&C meetings that Drop-off and pick up zone is dedicated for 2 min max purpose	Completed
19/02/2020	Cars not progressing in the drop off zone	Council: Contact Brisbane city CARS and patrol and issue and enforcement to amend the drivers behaviour School: contact QPS to monitor the situation and educate parents in P&C meetings that Drop-off and pick up zone is dedicated for 2 min max purpose	Completed
19/02/2020	Drivers parking in Inala Ave blocking access to the drop off zone	Council: Contact Brisbane city CARS and patrol and issue and enforcement to amend the drivers behaviour School: contact QPS to monitor the situation and educate parents in P&C meetings that Drop-off and pick up zone is dedicated for 2 min max purpose	Completed
19/02/2020	Parking across the Kindergarten entrance	School to educate parents in P&C meetings	Completed
19/02/2020	Community Car Park – drivers not following signage and dropping off students in an unsafe manner	School: educate parents in P&C meetings regarding road rules and safety issues	Completed
31/07/2020	Concerns has been raised about 2 min drop-off and pick up	School to discuss the issue in P&C meetings and educate the parents, if school intend to dedicate the volunteer supervisors, BCC will be able to contact TMR road safety team for training, Councillor will contact QPS to do patrols around	Underway

		the school at loading zone and enforce the non-compliant drivers and parents	
31/07/2020	Non-compliant drivers and parents survey	School will undertake the survey and counts for 1-week period to obtain the insight regarding the number of vehicles that are not complying with drop-off and pick up zone signage Council : data an sensitivity analysis and inform councillor about the result	Underway
31/07/2020	Investigate the feasibility of green time extension for right turn movement at the intersection of Blunder Road and Inala Ave to facilitate the parents that need to make U-turn whilst the loading zone is full and reached the capacity	Council will follow up with CRU to investigate the feasibility and signal timing optimisation specifically at afternoon peak hour. results will be shared with Councillor and School	Underway
31/07/2020	Staggered scheduling for pick up time was offered by Council but was not feasible due to school operation difficulties	Staggered scheduling is not feasible	Completed

Contacts

Contact Card

Name	Phone number	Description
Emergency (Triple Zero)	000	<ul style="list-style-type: none"> Emergency Police, Fire and Ambulance
Queensland Police Service	131 444	<ul style="list-style-type: none"> Speeding and moving vehicle enforcement Theft and property damage
Brisbane City Council	(07) 3403 8888	<ul style="list-style-type: none"> Traffic management plans Parking enforcement Footpath and road maintenance
Department of Transport and Main Roads	1300 360 135	<ul style="list-style-type: none"> Local road safety advisors Crossing supervisor enquiries Drop and go zone monitor training